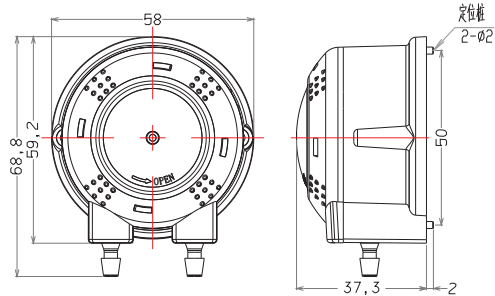
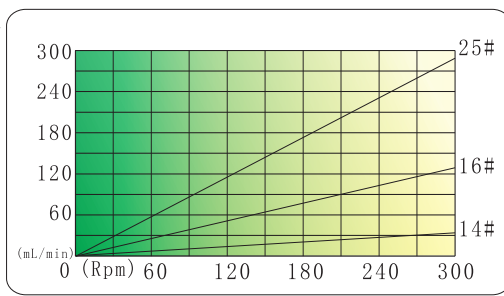




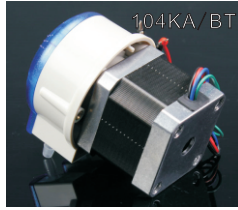
## 1. Dimension



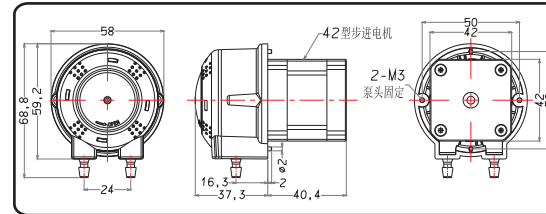
## 2. Flow rate



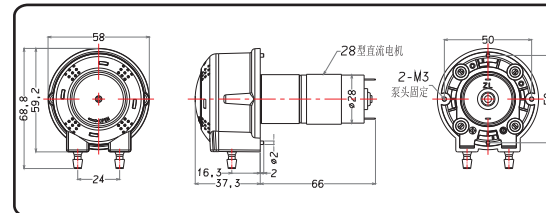
Model #	Tube	Tube clamp	Housing	Roller	Max flow	Power	Weight
104KA/ZL	14#	Fixed	PA66 & 20GF	POM	260mL/min	24W	170g
104KA/ZLX	16#				258mL/min		230g
104KA/BT	25#				279mL/min	36W	350g



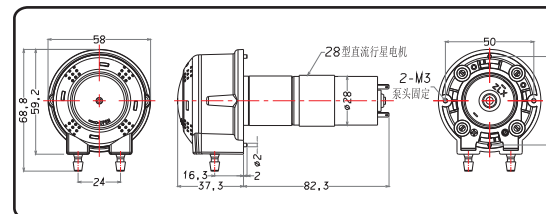
## 3. Install and use



104KA/BT : stepper motor driver, to adjust flow accurately with controller.

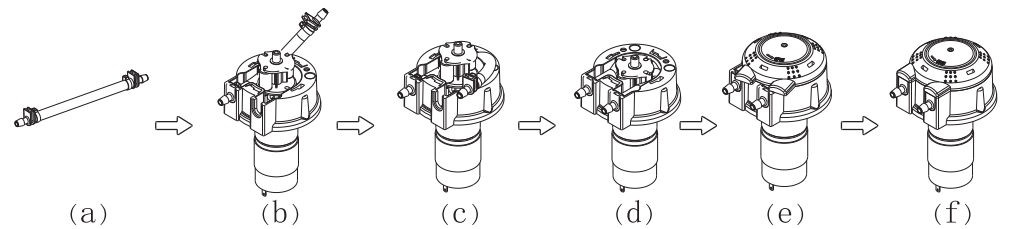


104KA/ZL : brush DC gear motor driver, 12V or 24VDC power supply To reverse by change plus-minus, adjust speed with external control board.



104KA/ZLX : brush DC planetary gear motor driver, 12V or 24VDC power supply. To reverse by change plus-n-minus, adjust speed with external control board.

## 4. Assemble tube



(a) Prepare tubeset

(b) Place one fitting into base

(c) Wind the rollers

(d) Tube on the middle, no distortion

(e) Align cover with base

(f) Rotate cover to place

Note: If you find the tube cracks, please clean the inside pump head. Regularly apply grease to extend tube and pump head life.

