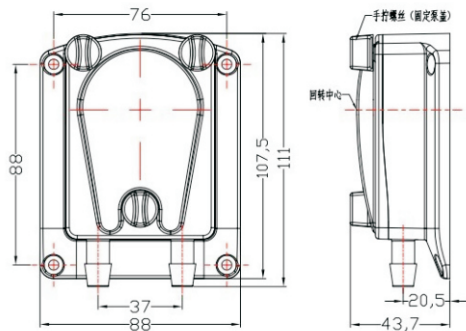
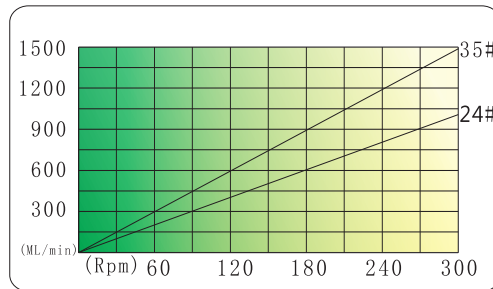




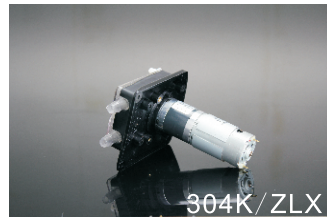
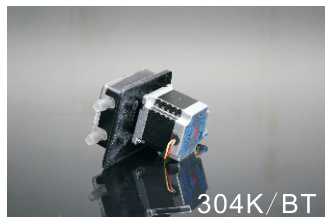
1. Dimension



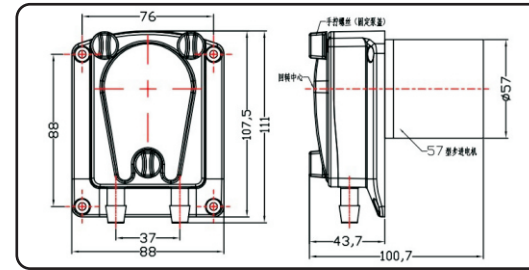
2. Flow rate



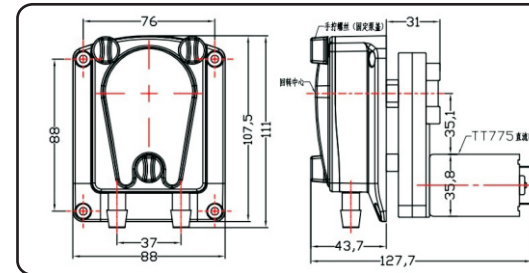
Model #	Tube	Tube clip	Housing	Roller	Max flow	Power	Weight
304K/ZL	24#	Fix	PC(cover) PA(body)	PA+MoS2	1500mL/min	16W	808g
304K/ZLX	35#					50W	552g
304K/BT						50W	837g



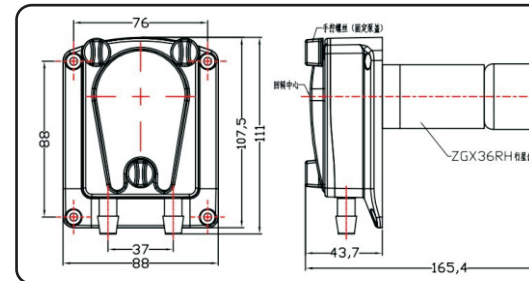
3. Install and use



304K/BT: drive by stepper motor, adjust flow rate with drive board.



304K/ZL: drive by brush DC gear motor, supply 12V or 24V DC, reverse by change plus-n-minus, adjust speed with external control board.



304K/ZLX: drive by brush DC planetary gear motor, supply 12V or 24V DC, reverse by change plus-n-minus, adjust speed with external control board.

4. Assemble tube

Tips: apply some grease on tube external wall to prolong life. Please use origin tube and many kinds of imported tube for option.

