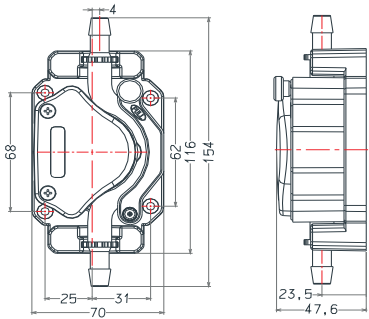


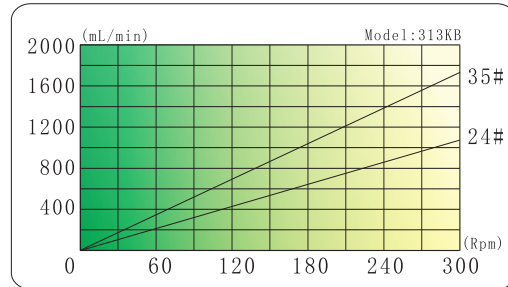
313KB Operation Manual



1. Dimension



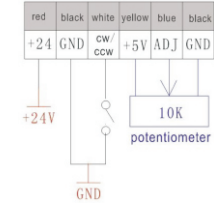
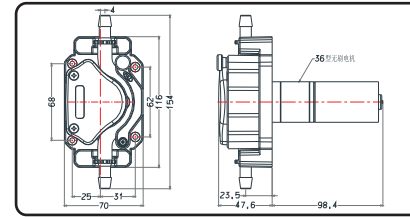
2. Flow rate



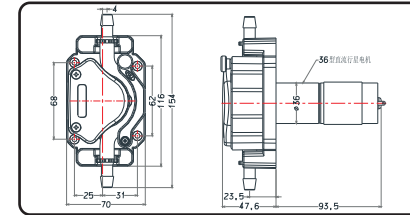
Model #	Tube	Tube clip	Housing	Roller	Max flow	Power	Weight
313KB/WTT			PA66 (pump body)	POM	1380mL/min	32W	610g
313KB/ZLX	24#	Fixed			1433mL/min		607g
313KB/ZL	35#				1738mL/min		734g
313KB/BT					1500mL/min		24W



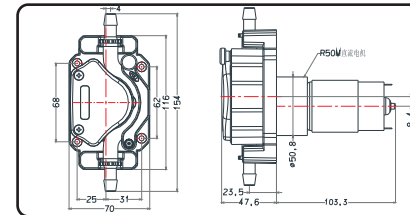
3. Install and use



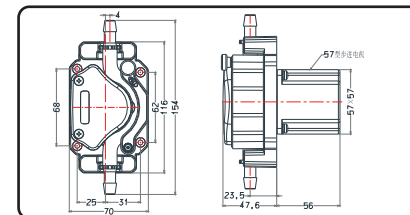
313KB/WTT: DC brushless planetary motor driver, 24VDC power supply.



313KB/ZLX: brush DC planetary gear motor driver, 12V or 24VDC power supply. To reverse by change plus-n-minus, adjust speed with external control board.

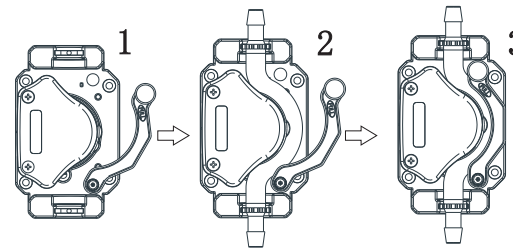


313KB/ZL: brush DC gear motor driver, 12V or 24VDC power supply. To reverse by change plus-n-minus, adjust speed with external control board.



313KB/BT: stepper motor driver, to adjust flow accurately by controller.

4. Assemble tube



1. Raise the screw and turn the block clockwise.
2. Put the built-in tube around the roller, and press down the fittings at the two ends in the slots. (zip ties up, the tube no distortion).
3. Raise the screws and turn the block counter-clockwise to let the location pin into position.

Note: If you find the tube cracks, please clean the inside pump head. Regularly apply grease to extend tube and pump head life.

Tube length inside pump head: 118 ~ 119mm

