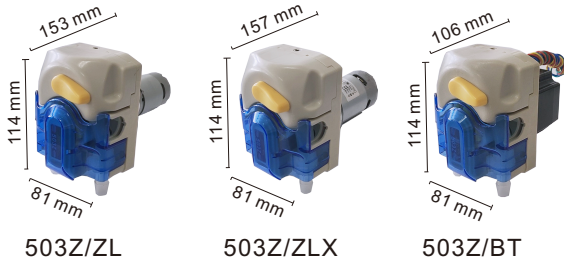


Application

- ◎ Ice cream machines
- ◎ Coffee machines
- ◎ Beverage machines
- ◎ Water quality sampling
- ◎ Soup dispensers



Pump Size



503Z/ZL

503Z/ZLX

503Z/BT

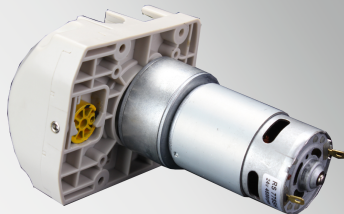
Features

- A versatile new peristaltic pump product with multiple tube arrangement options
- Exquisite appearance, compact structure, fine workmanship, with a handle design for easy tube installation and removal
- Adjustable pressure tube gap to prevent dripping and ensure reliable use
- Compatible with 2.4mm wall thickness tubes for easy transportation of viscous liquids
- Pump body base designed with installation connection holes, no need for separate installation.

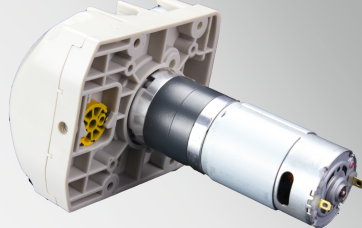
Technical Specifications

Pump Model	503Z/ZL	503Z/ZLX	503Z/BT			
Motor Type	Brushed DC	Brushed DC planetary	BT			
Power Supply	DC 12V/24V	DC12V/24V	DC 24V			
Power	≤24W	≤24W	≤36W			
Net Weight	710g	594g	896g			
Work Environment	Temperature range: 0°C (no freezing) to 60°C, relative humidity <85%RH					
Output Pressure	≤0.17MPa					
Flow Rate (unit:ml/min)						
rpm	166r	326r	507r	150r	300r	300r
Tube#	435	790	1350	355	725	745
24#	615	1110	1900	500	1020	1035
35#	695	1320	2185	600	1175	1110
36#						

503Z/ZL



503Z/ZLX



503Z/BT

