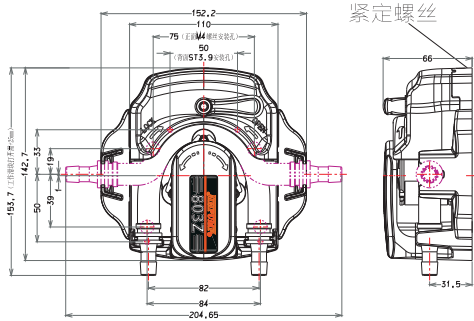


Application

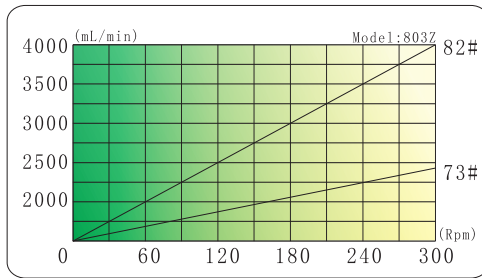
- Filling machine
- Juice machine
- Syrup machine
- Chemical equipment
- Environmental equipment



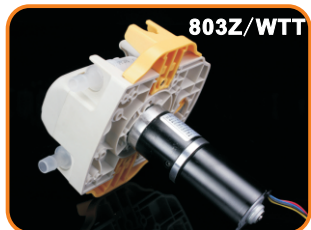
1. Dimension



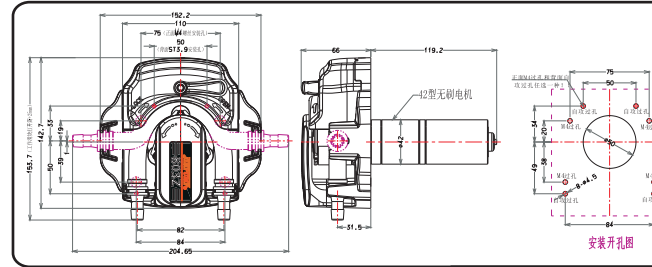
2. Flow rate



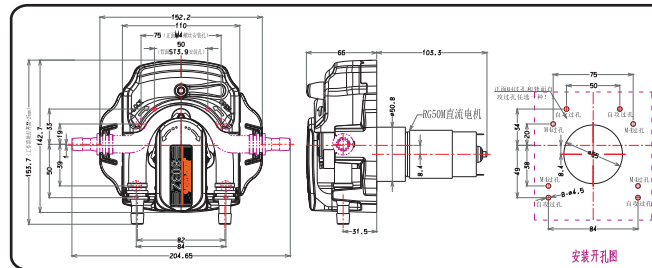
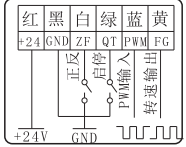
Model #	Tube	Tube clamp	Housing	Roller	Max flow	Power	Weight
803Z/WTT	73# 82#	Fixed	PA66	POM	3560mL/min	48W	1035g
803Z/ZLX					3680mL/min		1142g
803Z/ZL					4000mL/min		920g



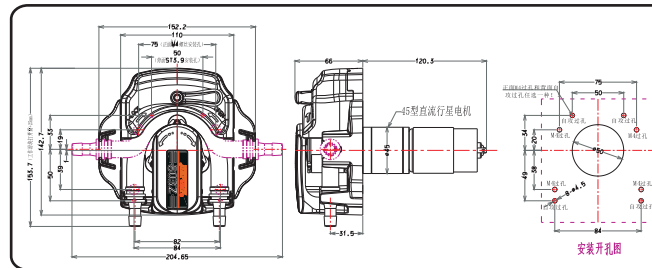
3. Install and use



803Z/WTT:
Driven by 42 type DC brushless speed-regulating motor, PWM speed regulation, frequency 1KHz, 24V DC power supply. Wiring as shown in the figure, pay attention that positive and negative poles reverse will burn out the motor!!

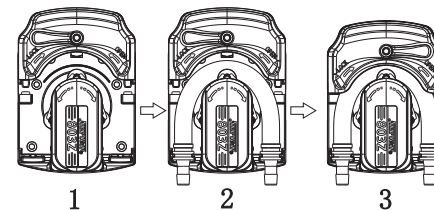


803Z/ZLX: Driven by 45 type brushed DC planetary gear motor, 24V DC power supply. To reverse by change plus-n-minus, adjust speed with external control board.



803Z/ZL: Driven by RG50M brushed DC motor, 24V DC power supply. To reverse by change plus -n-minus, adjust speed with external control board.

4. Assemble tube



1. Rotate the handle counterclockwise to open the slider.
2. The tube is bypassed by the roller, and the joints at both ends are snapped into the slot (the zip tie connector is facing upwards and the tube is not twisted).
3. Rotate the handle clockwise to the rightmost to lock slider.

Note: If you find the tube cracks, please clean the inside pump head. Regularly apply grease to extend tube and pump head life.

Tube length inside pump head: 182±1mm (U shape). When the pump head can not suck up liquid or the outlet pressure needs to be increased, the set screw above the pump head can be adjusted clockwise (the adjustment limit is that the pump head can be opened and closed normally, which will affect the service life of the tube).

