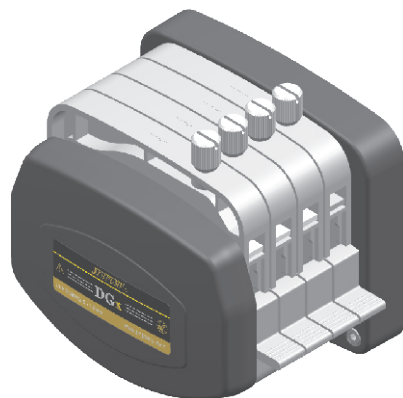


Feature

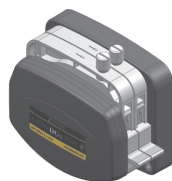
- ★ Multi channels
- ★ Easy and mechanical fixing tube
- ★ Adjustable accuracy structure
- ★ 8 rollers, low pulse
- ★ Compatible with several size tubes
- ★ Configured kinds of motors



1. Pump head



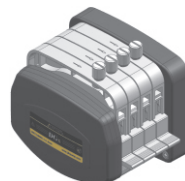
DGx1(8)



DGx2(8)

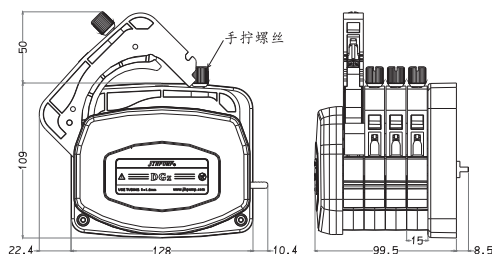


DGx3(8)

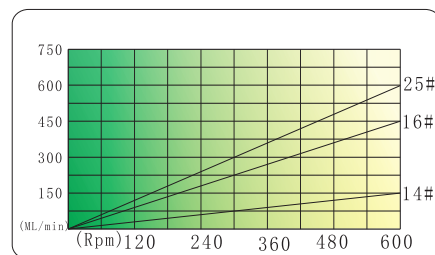


DGx4(8)

2. Dimension



3. Flow rate



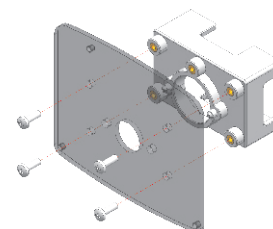
4. Basic parameter

Model #	Pump body	Roller	Tube	Weight
DGx1(8)	POM&PPS	304 stainless steel	14# 16# 25#	833g
DGx2(8)				1083g
DGx3(8)				1320g
DGx4(8)				1558g

5. Use

Install pump head:

- 1) Assemble head base plate to adapter with 4 pieces screw M4x12 as fig 1.
- 2) Take out cassette and fix head base plate to head cover by 4 pieces screw M4x16 as fig 2.



(fig 1)

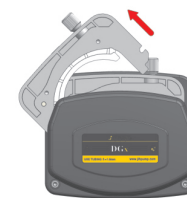


(fig 2)

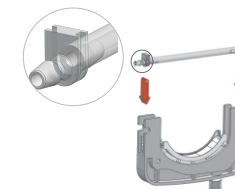
Assemble tube:



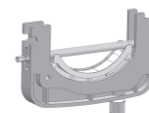
(a) Press down the lock of cassette.



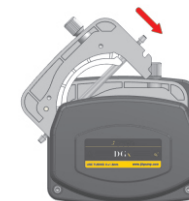
(b) Take out cassette.



(c) Insert tubeset into cassette.



(e) Insert in place.



(f) Install left of cassette first, then press down right of cassette.



(g) Rotate cw the knob to tight. Too tight will shorten tube life.

