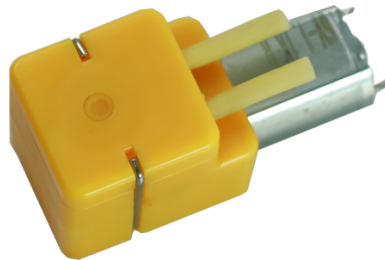


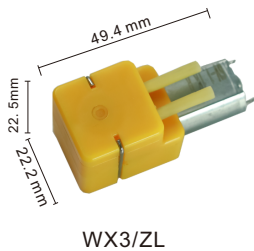


Applications

- ⊙ Floor scrubbers
- ⊙ Aromatherapy machines
- ⊙ Water planting
- ⊙ Hand sanitizer machine
- ⊙ Smart toilet seat



Pump Size



Features

- A micro peristaltic pump for micro-flow conveyance
- Flow range: ≤10ml/min
- Low noise, suitable for use with household appliances
- Compatible with highly corrosive inlet tubes

Technical Specifications

Pump Model	WX3/ZL
Motor Type	Brushed DC
Power Supply	DC 3.7V
Power	1-2W
Net Weight	29g
Work Environment	Temperature range: 0°C (no freezing) to 60°C, relative humidity <85%RH
Output Pressure	≤0.03MPa
Flow Rate (unit:ml/min)	
rpm	220r
Tube#	10
ID1.6* ∅ 0.8	

